

Daventry

28 High Street, Daventry, NN11 4HU

T: 01327 879869

Offices also located in Northampton

stonhills.co.uk



4 St. Hildas Close, Daventry

NN11 4TZ

£219,950



LOUNGE
17'8 into bay x 12'10

Leaded effect single glazed bay window to front aspect. Double panel radiator. Under stairs storage cupboard. Coving to ceiling. Recently fitted feature 'Adam' style fireplace with gas fire. Door to kitchen. Stairs rising to first floor landing.

KITCHEN
12'9 x 8'5

Single glazed door and window to rear aspect. Double panel radiator. Double glazed 'French' style door to lean to conservatory. Fitted in a range of base mounted units with roll top work surface over. Single drainer sink with tiled splash backs. Built in oven and hob. Space which may be suitable for white goods. Wall mounted boiler.

LEAN TO CONSERVATORY
17'7 x 8'

Single glazed 'French' style doors to front and rear aspects with the rear doors opening onto enclosed decking. Single glazed windows to rear aspect. Power.

FIRST FLOOR
LANDING

Access to roof space. Doors to all bedrooms, bathroom and airing cupboard.

BEDROOM ONE
12'10 x 8'6

Leaded effect single glazed window to front aspect. Double panel radiator.

BEDROOM TWO
8'5 x 7'

Single glazed window to rear aspect. Single panel radiator.

BEDROOM THREE
8'5 x 5'7

Single glazed window to rear aspect. Single panel radiator.

BATHROOM

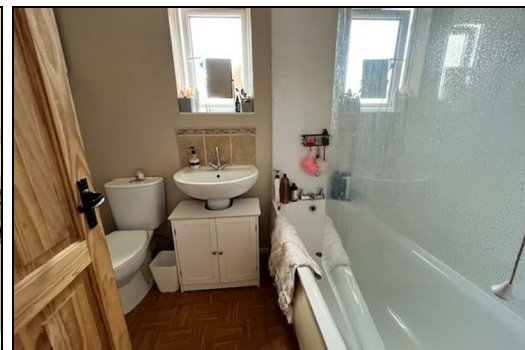
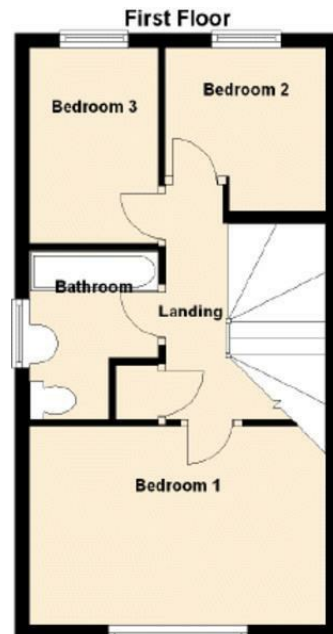
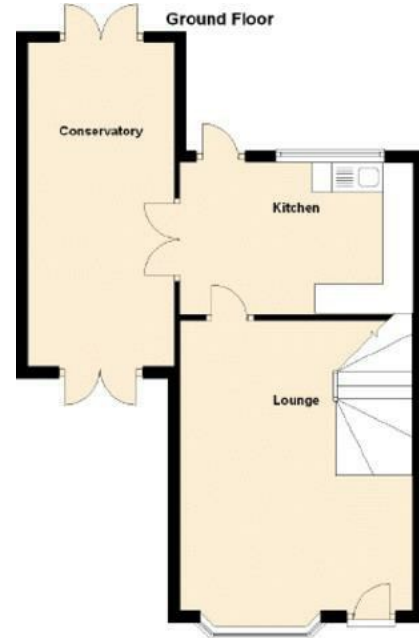
Obscure single glazed window to side aspect. Re-fitted white suite comprising of a low level W.C, pedestal hand wash basin with mixer tap over and a panelled bath with shower over. Single panel radiator.

OUTSIDE

The front garden - Mainly laid to lawn with driveway parking.

The rear garden - Enclosed by timber panel fencing. Patio area. Mainly laid to lawn. Timber shed.

PLEASE NOTE: CURRENT COUNCIL TAX BAND IS B.



Zoopla.co.uk

NATIONAL ASSOCIATION
OF
NAEA
ESTATE AGENTS

O-E-A
Ombudsman
www.oea.co.uk

rightmove.co.uk
The UK's number one property website

Appliances: Stonhills have not tested any equipment, fittings for services and so cannot verify they are in working order. The buyer is advised to obtain verification from their Solicitor or Surveyor. Measurements are for guidance only and are approximate. The buyer is therefore advised to check measurements if they are required for any other purpose e.g. fitted carpets, furniture, etc.